



## COMMUNITY FACILITIES

State and local governments provide a number of services to their citizens and are referred to as public facilities. Public facilities represent a wide range of buildings and services built and maintained by the different levels of government. Such facilities are provided to insure the safety, wellbeing and enjoyment of the residents of Victoria. These facilities and services provide residents with social, cultural, educational, and recreational opportunities, as well as law enforcement and fire protection services designed to meet area needs.

It is important for all levels of government to anticipate the future demand for their services if they are to remain strong and vital. The analysis of existing facilities and future services are contained in the Facilities Chapter. Alternatively, in some instances, there are a number of services not provided by the local or state governmental body and are provided by non-governmental private or non-profit organizations for the community as a whole. These organizations are important providers of services and are in integral part of the community.

## Community Facilities Plan

The Facilities Plan component of a Comprehensive Development Plan reviews present capacities of all public and private facilities and services.

The Facilities Plan for Victoria is divided into the following categories:

- City Facilities
- Education
- Health Care

## CITY BUILDINGS

### City Hall (Shown above)

City Hall is near the intersection of W. 4th Street and Main Street in downtown Victoria. The office contains the City Council chambers, and houses the City Clerk and the Utilities Clerk.

## EDUCATION

### PUBLIC SCHOOLS

Victoria is served by USD 432 in Victoria

### Victoria Schools (USD 432)

USD #432 is focused on student achievement and school improvement. The five R's will guide the district as they prepare their PK-12 students for college and career readiness: Caring



## Community Facilities

Relationships, a Responsive Culture, Relevant Educational Opportunities, Rigorous Coursework, Results Evident in Growth and Learning. The goal is to ensure a quality education for all students.

Victoria Schools serve the majority of eastern Ellis County. The school district is located in Victoria. In 2018, the District had approximately 285 students, three administrators, 27 teachers, one counselor, and six additional staff.

The District's two facilities include:

- Victoria Elementary School
- Victoria Junior/Senior High School

Source: <http://www.usd432.org/>

### PAROCHIAL SCHOOLS

#### Holy Family Elementary

Holy Family Elementary has a rich history of Catholic school education in Hays. Formerly known as St. Joseph Tri-Parish School and located at 210 W. 13th, the history of the building dates back to 1908.



Photo 6.1 Victoria USD 432  
Source: Google Earth

Through the years, the Capuchin Friars and Sisters of St. Agnes provided for the spiritual and educational needs of the students. The school has since made the transition from a tuition-free program staffed by the religious to one staffed by Catholic lay persons which implemented a tuition fee providing for the continued operation of the school. The faculty provides a strong foundation for the students. Turnover among teachers is minimal, adding to the strength of the program.

The school motto emphasizes the goals of our students: "Live, love, and learn."

The school has five administrative staff, 21 faculty, five staff, and 14 para-professionals.

Source: <http://hfehays.org/>

#### St. Mary's Catholic School - Ellis

St. Mary's School in Ellis Kansas is a private, K-6 Elementary school with a two year pre-k program. From its origins, this school was instituted to provide a Catholic, Christian education for all of its students.

The school has two administrative staff and 11 faculty members.

Source: <https://stmarysofellis.org/school-about-us>

#### Thomas More Prep/Marian High School - Hays

Thomas More Prep-Marian (TMP-Marian) is an inter-parochial, Catholic, co-educational school offering grades 7-12. Located in Hays, Kansas, the school was first established by Capuchin Franciscan priests in 1908. The school has undergone many changes during the last century, but has always maintained its central philosophy of a Christ-centered education. Known as St. Joseph's Military Academy up until 1970, the school then merged with St. Francis Seminary to become Thomas More Prep High School. In 1981, Marian High, an all-girls school, merged with TMP to form the school in its present form, Thomas More Prep-Marian. Most recently, grades 7 and 8 were added during the 2012-2013 school year.

### POST-SECONDARY EDUCATION

There are three post-secondary educational facilities located near Victoria within Ellis County. These are Fort Hays State University, North Central Kansas Technical College, and Hays Academy of Hair Design.

#### Fort Hays State University (FHSU)

FHSU is the leading forward-thinking, entrepreneurial university of the Midwest. They have an enrollment of more than 15,000 students and offer certificate and degree programs at the associate, bachelor's and master's levels through 31 academic departments (also offering a Doctorate of Nursing Practice degree). They attract goal-oriented students who want premier



learning opportunities both inside and outside the classroom combined with extraordinary one-to-one attention and support.

Fort Hays State's tree-filled campus is located in Hays, Kansas (on I-70, halfway between Kansas City and Denver). FHSU is a welcoming community in the heart of historic Hays, a community that celebrates its frontier roots and its modern sensibility - coffee shops, one-of-a-kind restaurants, shopping, and a vibrant arts scene.

**(Note: text modified slightly from website)**

Source: <https://www.fhsu.edu/about/index>

**North Central Kansas Technical College (NCKTC)**

NCKTC was established in 1965 and is a fully accredited college located in Beloit (Main campus) and Hays, Kansas. They offer over 20 different programs of study and pride themselves on being nationally ranked in job placement and graduation rates.

They strive to provide innovative and personalized education to empower learners and develop their skills. NCKTC is dedicated to being a leader in workforce development and their values of integrity, dedication, and communication all help them achieve their goals.

**(Note: text modified slightly from website)**

Source: <https://ncktc.edu/about-us/>

**Hays Academy of Hair Design**

Hays Academy of Hair Design opened its doors on April 1st, 1981. In January of 2003, was purchased with the vision of offering the students with an up to date, cutting edge education. The goal was an education that will enable students to thrive in the beauty industry.

**(Note: text modified slightly from website)**

Source: <https://haysacademy.edu/about-beauty-school/>

**HEALTH CARE**

**VICTORIA HEALTH CARE**

The Victoria Health & Public Safety Center houses multiple services for the Victoria community. In 1998, this building was built to assist the citizens of Victoria and the surrounding area in accessing convenient health care for non-urgent needs. The clinic is operated by First Care Clinic. An ambulance service was added through Ellis County Emergency Medical Services (EMS) in 2001.

Source: <http://victoriaks.com/health.htm>



Photo 6.2 Victoria Health and Public Safety Center  
Source: <http://victoriaks.com/health.htm>

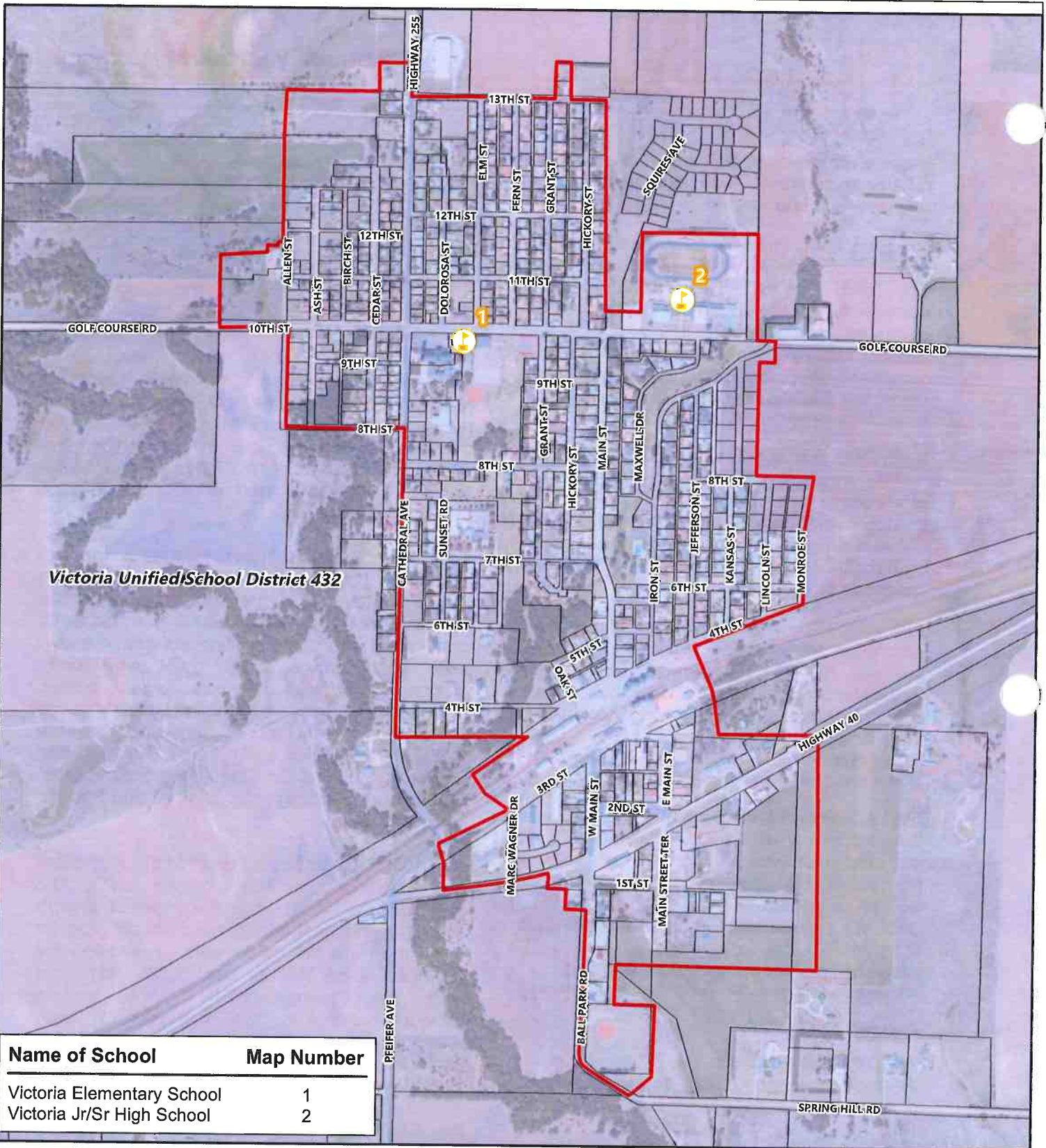
**HAYS MEDICAL CENTER**

Hays Medical Center is a private, not-for-profit hospital formed by the 1991 merger of two religiously affiliated facilities, and provides the only tertiary level services in the region. The organization's mission to "To Help People Be Healthy. HaysMed is part of The University of Kansas Health System.

HaysMed's DeBakey Heart Institute is the first cardiology program to provide cardiac services for the western half of the state. Additionally the 207-bed facility provides acute and pediatric care along with cardiac, neonatal and intensive care units; cancer, joint and spine care, diagnostic imaging and eye surgery center; emergency department including Level III trauma services and a sexual assault response team (SART), rehabilitation and hospice. HaysMed also maintains a Wound Care and Hyperbaric Center, Sleep and Neurodiagnostic services and Robotic Surgery Program.

A total of 5,706 admissions and 169,511 outpatient procedures documented between July 1, 2015 and June 30, 2016, while the medical group's specialty and rural health clinics accounted for more than 134,887 office visits. In addition the DeBakey Heart Institute had 2,528 admissions while the Dreiling/Schmidt Cancer Institute provided services to 1,888. Last year 717 births were also recorded at the hospital while 11,818 patients were seen in the Emergency Department.

The Center for Health Improvement, located in the Bickle/Eagle Health Complex at HaysMed, is an MFA accredited fitness center that incorporates hospital-based fitness and rehabilitation programs with occupational medicine and independent physician clinics, and has a membership in the fitness area of 2,000.





Hays Medical Center maintains a local market share of 72%; with total primary/secondary/tertiary service are at 25%. Administering perhaps the largest Critical Access hospital network in the country, HMC earned the 1997 National Rural Health Association Outstanding Program Award for its EACH/RPCH and Telemedicine programs. It is NIAHO accredited by DNV Healthcare and ISO Certified, a Level 3 Trauma Center, an accredited Chest Pain Center with PCI, a Primary Stroke Center and a Certified Hip and Knee Replacement Center of Excellence by DNV GL Healthcare. Approximately 1,500 associates staff the medical center and physician clinics, accredited by DNV Healthcare.

Source: <https://haysmed.com/about-us/>

## **Community Facilities Goals and Policies**



## Community Facilities

---