

8

Public Safety



PUBLIC SAFETY

Public safety encompasses fire, emergency management, emergency medical services (EMS), and law enforcement. These services are made up of municipal and county-wide providers.

Victoria Police Department

Victoria Police Department

The City of Victoria has their own Police Department serving the residents of Victoria.

Law Enforcement Center

Ellis County Law Enforcement Center

The Ellis County Law Enforcement Center is located at 105 W. 12th Street in Hays. The Law Enforcement Center is adjacent to the Courthouse in Hays and is staffed by the Ellis County Sheriff's Office and the City of Hays Police Department. The Center contains 20,000 square feet of jail space containing 72-beds.

County Law Enforcement

Ellis County Sheriff's Department

Since the establishment on February 26, 1867 the office has provided continued law enforcement

protection for a jurisdiction that covers just over 900 square miles. Situated in the crosshairs of Interstate 70 and U.S. 183 Highway the county has a July 1, 2016 census population estimate of 28,893. They serve the municipalities of Ellis, Hays, Schoenchen, and Victoria as well as the unincorporated communities of Antonino, Catharine, Emmeram, Munjor, Pfeifer, Toulon, Turkville, Walker, Yocemento, and all rural areas of our county. Their history is rich with the likes of Sheriff James Butler "Wild Bill" Hickok, Sheriff Peter R. "Rattlesnake Pete" Lanahan, and Sheriff Alexander Ramsey.

The Sheriff's Department is comprised of five divisions: Patrol Division, Courthouse Division, Jail Division, Investigative Division, and the K-9 Division.

Patrol Division

Patrol deputies are responsible for the preservation of peace and protection of our citizens. A few of their day to day responsibilities include civil process, warrant service, traffic enforcement, criminal and accident investigation, criminal and civil transports, animal



calls, and assisting Ellis County Emergency Medical Services and Ellis County Rural Fire.

Courthouse Division

Courthouse deputies are responsible for security of the Ellis County Courthouse. A few of their day to day responsibilities include security for judges, juries, plaintiffs, and defendants. Deputies are also responsible for running courthouse visitors and their personal belongings through the metal detector and x-ray machines.

Jail Division

Jail deputies are responsible for the security and welfare of the inmates housed within the Ellis County Jail. A few of their day to day responsibilities include; inmate booking, maintaining order in the jail, escorting inmates to and from court appearances, bonding, transporting, and invoking disciplinary measures when necessary.

Investigative Division

Detectives are responsible for the investigation of major case crimes within our community. Day to day responsibilities include interviewing victims, witnesses, and suspects, collection of evidence, managing crime scenes, and providing court testimony. Detectives may also be assigned to the Ellis County Drug Enforcement Unit.

K-9 Division

Our K-9 Deputy is responsible for the training and care of our Police Service Dog (PSD) Raiko. His day to day responsibilities include providing support for the Patrol Division, drug interdiction, locating wanted felons, finding crime scene evidence, and educational presentations. Logically, our Canine Deputy is also assigned to the Ellis County Drug Enforcement Unit (DEU).

Source: <https://www.ellisco.net/102/Sheriff>

Emergency Medical Services

Ellis County EMS

Ellis County EMS strives for excellence in both service and a professional staff. Through education, training, and a healthy work environment, Ellis County EMS maintains excellence in all they do. They serve a 900 square mile county with three staffed stations. Staffing four ambulances at all times, they provide quality

response times to every area of Ellis County. Offering a Paramedic response on all calls within the county, they offer the highest level of care available.

They have opportunities available in the community for EMS professionals to continue their education in many ways. There are always changes and new ideas developing in the medical field and staying up to date is important to have the ability to provide the best patient care possible.

Emergency Medical Services has split locations; the first is called Station 2 and is located at 305 W. 4th Street in Ellis. The second facility is located at 204 Marc Wagner Drive in Victoria.

Source: <https://www.ellisco.net/94/Emergency-Medical-Services>

Fire Departments

City of Victoria

The Victoria Volunteer Fire Department is composed of 20 volunteers and six trucks.



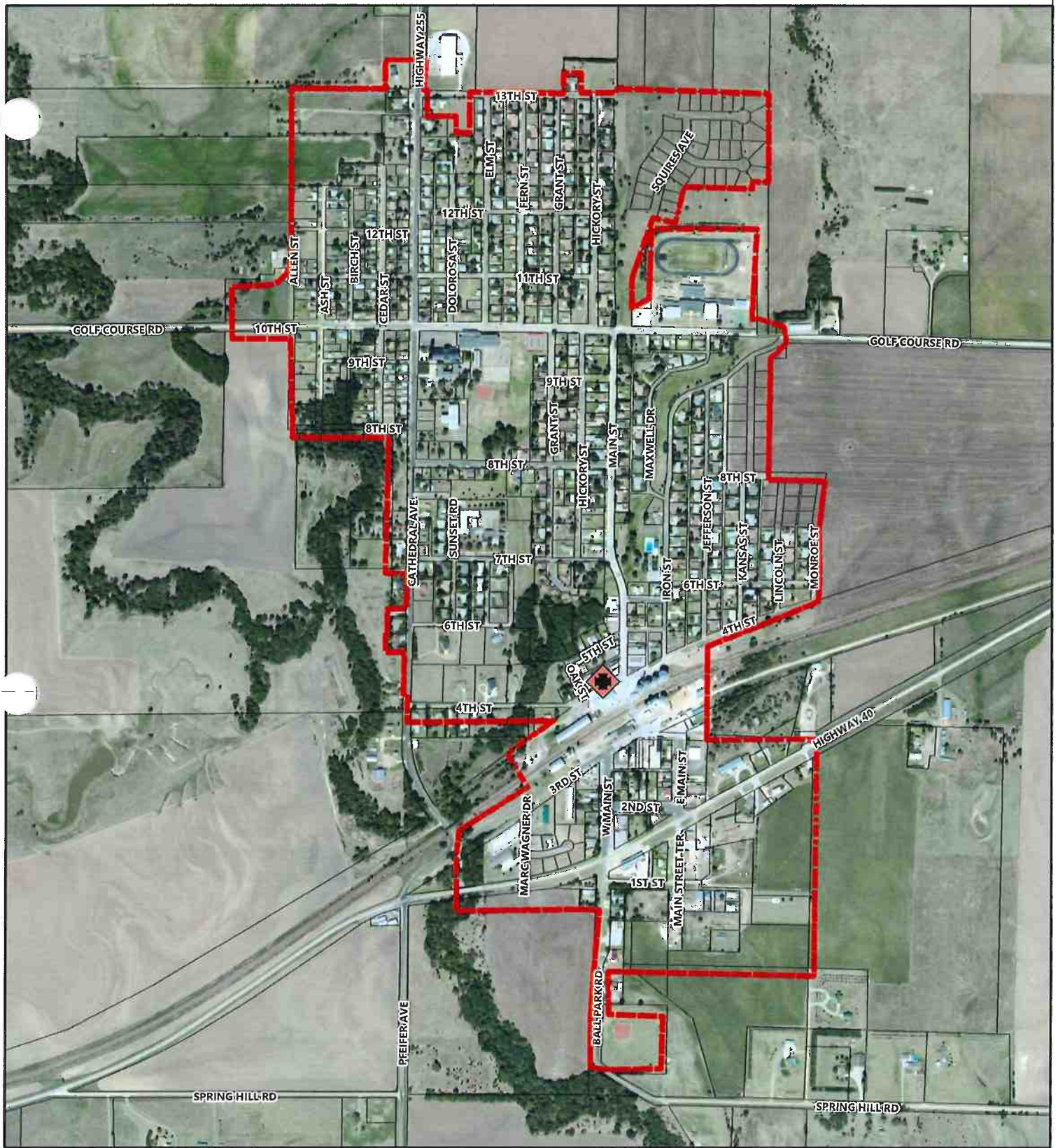
Photograph 8.1
Victoria Fire Hall

Source: <http://victoriaks.com/departments.htm>




County-wide

The Ellis County Fire Department (ECFD) has eight rural companies located throughout Ellis County (Catharine, Chmeid Ranch, Ellis, South of Ellis, Hays, Munjor, Schoenchen & Victoria), with approximately 80 paid per call firefighters. The ECFD is served by a Fire Chief which also acts as the Emergency Manager for the county.

Source: <https://www.ellisco.net/101/Fire-Emergency-Management>



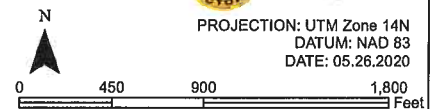
Legend

-  Fire Station
-  Victoria Fire District Boundary
-  Parcel

**Figure X.X - Fire District
Comprehensive Plan
Victoria, Kansas**



PROJECTION: UTM Zone 14N
 DATUM: NAD 83
 DATE: 05.26.2020





EMERGENCY MANAGEMENT

Emergency Management Department

Emergency Management is located at 1105 E. 22nd Street in Hays. Emergency Services include the Ellis County Fire Department and Emergency Management for the county.

The Ellis County Emergency Management Department (ECEMD) coordinates all components of the Emergency Management System by working closely with local, state, and federal agencies, as well as volunteer and private organizations.

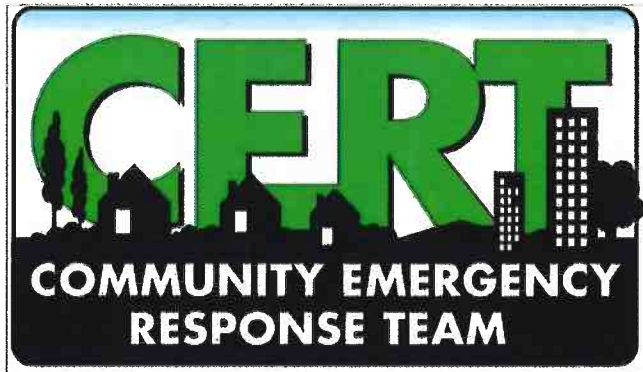
ECEMD actively promotes protection of people, property, and the environment against natural, technological, vector, and civil societal hazards.

ECEMD belongs to several networks including the Federal Emergency Management Agency (FEMA), Community Emergency Response Team (CERT), and Local Emergency Planning Committee (LEPC).

Source: <https://www.ellisco.net/101/Fire-Emergency-Management>

- Responding to public requests for information on chemical inventory or releases
- Providing planning support for emergency responders and industry members
- Coordinating and hosting training
- Increasing community awareness concerning issues like: chemical facilities in your area, how to shelter-in-place, when to evacuate, and who to call when you have questions.

Source: <https://ks-elliscounty2.civicplus.com/126/Local-Emergency-Planning-Committee>



Community Emergency Response Team (CERT)

The Community Emergency Response Team (CERT) program educates individuals about disaster preparedness for hazards that may impact their area. The team helps train the community about disaster response skills, such as fire safety, light search and rescue efforts, team organization, and disaster medical operations.

Source: <https://ks-elliscounty2.civicplus.com/126/Local-Emergency-Planning-Committee>

LEPC

Local Emergency Planning Committee

Local Emergency Planning Committee (LEPC)

The Ellis County Local Emergency Planning Committee (LEPC) is a community-based organization created by the Emergency Planning and Community Right-to-Know Act of 1986 (EPCRA), to increase hazardous materials (Hazmat) preparedness and response. The committee has representatives from local city and county government, healthcare facilities, non profit organizations, private businesses, and volunteer groups. The LEPC provides support to the community by:

- Receiving and processing chemical inventory reports from local industry (also known as Tier II)