



9 Communications and Utilities

COMMUNICATIONS AND UTILITIES

Communication and utilities are critical to most people. As humans, we want to stay in touch with our families, friends, and the day to day activities and news occurring around us. This Chapter provides the different communication media available in and around Victoria and throughout Ellis County. In addition, the Chapter examines the different utilities in Victoria.

COMMUNICATIONS

Communication comes in many forms. Residents communicate via newspapers, television, cable, radio, and the internet. This section will identify the different providers available in and around Victoria and within Ellis County.

Newspapers

Hays Daily News

The primary local newspaper is the Hays Daily News. The paper has both a printed and on-line presence. The printed edition is published daily, except Saturday and Monday. The total circulation is between 9,000 and 10,000 daily.

Hays Post (Eagle Communications) online

The Hays Post is published online by Eagle Communications.

Ellis Review

The Ellis Review is published weekly on Thursdays.

Other papers covering the area

Hutchinson News
Great Bend Tribune
Salina Journal
Topeka Capital-Journal
Wichita Eagle

Television

Victoria has a number of local over the air television stations, these include:

- KWCH-TV (KBSH-TV) Wichita/Hays
- KAKE 10 Wichita
- KOOD 9 Hays/Great Bend
- KDCU-DT Wichita
- KSCW-DT Wichita
- KSAS-TV Wichita
- KSNC Great Bend



Telephone Service

Telephone service in Victoria is provided by Eagle Communications and Nex-Tech.

Cable Television

Victoria, where available, is served by Eagle Communications and Nex-Tech.

Internet Service

Victoria has two main options for broadband internet access including leased lines, frame relay, and a variety of DSL services. Cable high-speed internet connections are also available, all of which are attractive for remote hosting, server farms, and related information technology (IT) services. Firms such as Eagle Communications and Nex-Tech host national and regional e-commerce sites.

Source: Ellis County Comprehensive Plan 2020

UTILITIES

Maintaining the existing infrastructure and providing opportunities for growth, where appropriate, is an important consideration for Victoria. By efficiently planning for maintenance and strategically locating maintenance equipment and personnel, the county can ensure maintenance and construction occur in a timely and cost effective way.

Storm Drainage

Storm drainage is handled by surface drainage throughout the city's jurisdiction. Storm drainage flows into the city's network of swales, ditches, and streams during heavier rains and eventually into either North Fork of Big Creek or Mud Creek; then into Big Creek. Big Creek eventually flows into the Smoky Hill River east of Ellis County.

Victoria Water System

Rural Water Systems

There are a number of different Rural Water Districts within Ellis County; however, the closest to Victoria is Ellsworth County RWD #1. Victoria is in the process of connecting to the Rural Water District in order to supplement their city water wells.

Trego Consolidated RWD #2

Trego Consolidated RWD #2 serves much of the western and northern part of the county. The distribution system for Trego RWD #2 has smaller line sizes and may need to be upgraded to provide additional water supply in Ellis County. Trego RWD #2 also provides partial or full water supply for Ellis Consolidated RWD #1C and Ellis Consolidated RWD #6. The water system is made up of a mixture of 4 to 6 inch lines and some lines greater than 6 inches. See Figure 9.1 for the location of the RWD plus the location and size of their infrastructure.

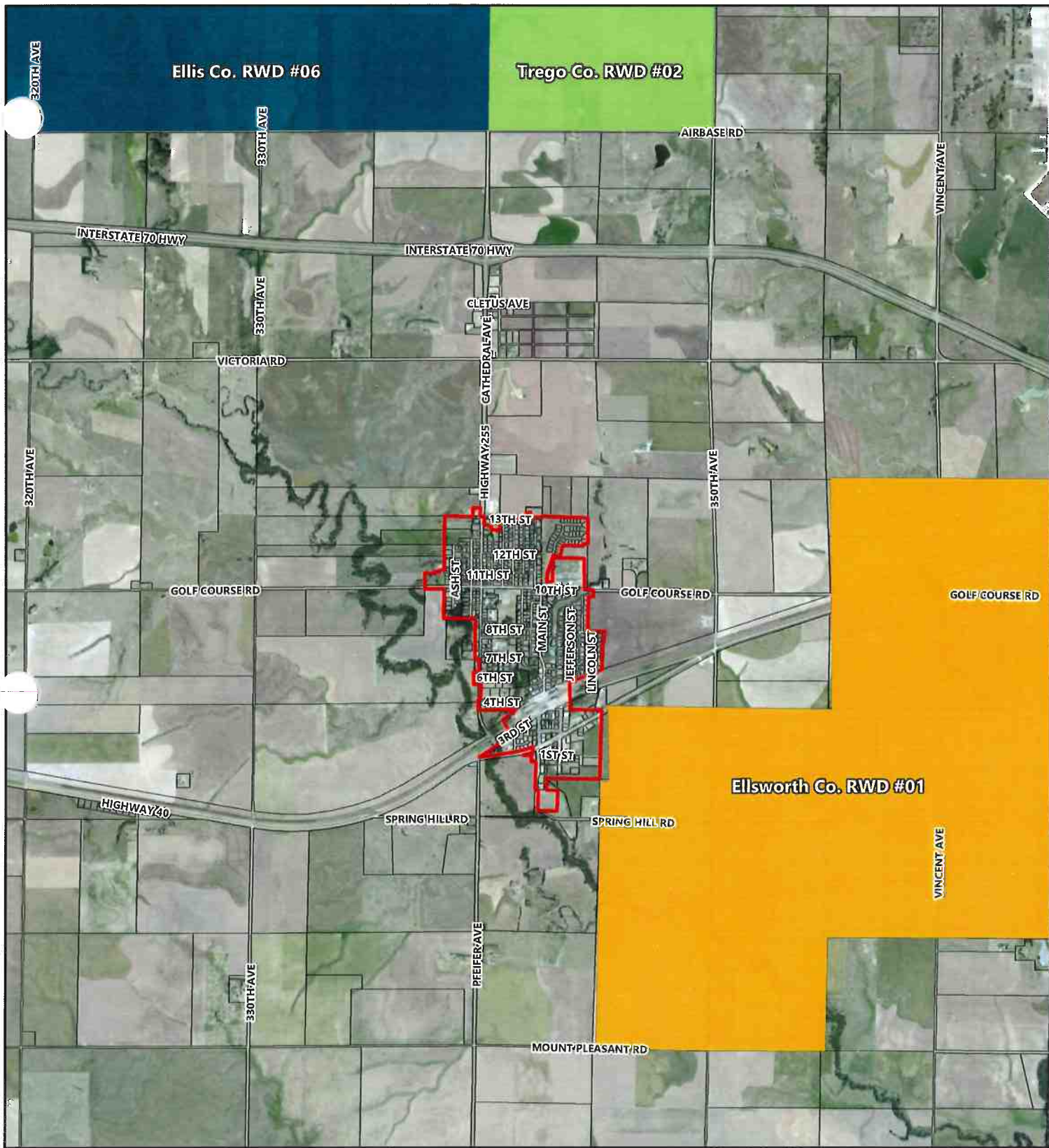
Wastewater

The city of Victoria has a series of sanitary sewer lines running throughout the community. The collection system then transfers the waste into a three cell lagoon system approximately one-mile east of Victoria.






The lagoon system has a capacity of ***gpd. Currently, the system is processing on average *** gpd. Therefore, the system has *** gpd additional capacity.



Photo 9.1 Victoria and Victoria Lagoon Location
Source: Google Earth



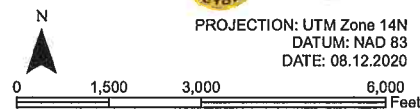
Legend

-  Victoria City Limits
-  Parcel
- VD Boundary**
-  Ellis Co. RWD #06
-  Ellsworth Co. RWD #01
-  Trego Co. RWD #02

**Figure X.X - Rural Water Districts
Comprehensive Plan
Victoria, Kansas**



PROJECTION: UTM Zone 14N
DATUM: NAD 83
DATE: 08.12.2020





**Communications and Utilities Goals
and Policies**